



Messiah Evangelical Lutheran Church
122 W. 7th St.

Grand Island, NE 68801

(308)382-3471

<http://www.messiahgi.org>

<https://www.facebook.com/messiahgi.org>



Messiah's Mission Statement

Messiah Ev. Lutheran church, a fellowship of baptized people, nurtured by the Holy Spirit, called to boldly share the message of God's Saving Grace through Jesus Christ. We joyfully welcome all into this family of Christ, where each can grow in faith, hope, and love. With Jesus as our guide, we will touch people with

God's love by teaching, praying, enriching families, and ministering to our community.

Congregational Information

Congregational ID# 03392

Synod 4A Nebraska



Messiah's Staff



Shared Ministry

Interim Ministry: Fr. Robert Lewis – St. Stephen's Episcopal Church
Pr. Jim Fruehling – Mosaic Lutheran Services

Parish Administrator: Laura Gregory

Director of Family Life / Youth Ministry: Courtney Berg

Parish Nurse: Sonja Simpson

Organist: Jared Hansen, Lorriane Kohtz

Accompanist: May Lenner

Custodian: Lorriane Jensen

Wedding Coordinator: Lorriane Kohtz

Web Site / Social Media: Mindy Osterman

Council / Leadership Team

Erich Fruehling, President	(308)381-2630 Personnel Rep.
Theresa Burson, Vice Pres.	(308)379-4225 Christian Ed.
Brenda Kucera, Secretary	(308)379-2421 Social Ministry
Jim Elrod, Council	(308)382-7667 Christian Ed.
Jim Fandry, Council	(308)395-7346 Property Comm.

Linell Schultz, Council	(308)380-9999	Worship & Music,
Alice Elstermeier, Council	(308)	Memorial Rep.
Jeff Koch, Council	(308)384-1983	Scholarship

Affiliations

Nebraska Synod ELCA

Bishop: Brian Mass

4980 S. 118th St.

Omaha NE 68137

(402)896-5311

website: www.nebraskasynod.org

Evangelical Lutheran Church in America

Presiding Bishop: Elizabeth Eaton

8765 W. Higgins Rd

Chicago, IL 60631

Phone: (800)638-3522

website: www.elca.org

Congregational Statistics:

See attached ELCA Congregational Trend Report



Summary:

Congregation: Messiah Grand Island NE 68801

Nebraska Synod Conference: Loup-Platte Year Organized: 1883

From 2011 to 2018	2011	2012	2013	2014	2015	2016	2017	2018	%Chg (11 -18)
Baptized Membership	1,020	1,010	1,003	994	779	582	573	514	-49.6%
Members Received By:									
a. Baptism: Children	6	7	7	4	5	7	2	4	
b. Baptism: Adults	0	0	0	0	0	0	0	1	
c. Affirmation of Faith	0	0	2	0	7	0	0	2	
d. Transfer	6	0	6	4	7	5	0	0	
e. Other & Stat. Adjustment	1	0	0	0	1	0	4	0	
Total Members Received	13	7	15	8	20	12	6	7	
Members Removed By:									
a. Death	8	8	10	14	12	8	8	5	
b. Transfer	4	5	11	3	8	12	6	2	
c. Other & Stat. Adjustment	0	4	1	0	215	189	1	59	
Total Members Removed	12	17	22	17	235	209	15	66	
Membership Change	1	-10	-7	-9	-215	-197	-9	-59	
Baptized Youth Confirmed	0	5	5	4	3	2	0	7	
Confirmed Membership	751	756	733	724	535	473	462	435	-42.1%
Average Worship Attendance	170	169	157	133	140	131	104	97	-42.9%
% Attending Worship[1]	16.7%	16.7%	15.7%	13.4%	18.0%	22.5%	18.2%	18.9%	13.2%

Assistance provided to people with disabilities:

- X Wheelchair access throughout the building(s)
 - Sign language interpreters
 - Braille worship materials
 - Mental health ministries
- X Large print worship materials
 - Ministry with people with developmental disabilities
- X Assistive devices for the hard of hearing
 - None of the above

Community Context: Small city 10,000 to 49,999 pop. ZIP Codes Served: 68801 68803 68827
68865 68832 68872

Messiah's Service Ministries **in our community**

Messiah is a partner, since its inception, in the Chrysalis Lutheran Home for low-income elderly people. Members of our church serve on the board of directors.

Messiah provides meeting space for the local chapter of Narcotics Anonymous.

Messiah's quilting ministry makes approximately 100 to 200 quilts per year. The disadvantaged use the quilts locally and some sent to overseas missions. Once a year a special quilt made and donated to the Carol Joy Holling Camp quilt auction. In addition, our graduating High School seniors receive a quilt at a special worship service.

Every Saturday evening 80 – 120 guests receive a free hot meal through the ministry at Messiah. St. Francis Hospital helps to provide most of the food for this meal program, and our church seeks donations of food from local grocery stores to fulfill the remainder of the food needed. We get help from other churches, civic organizations and individuals as volunteers to help us serve the food. It affords service in a great mission project for adults, youth and confirmation groups. In addition, several of our members volunteer at the Salvation Army serving evening meals.

Approximately 20 members of our congregation volunteer to tutor grade school children at Howard Elementary School.

Messiah donated \$52,000 along with a member donating \$52,000 to Habitat for Humanity. As a result, two homes had been built for needed families. In addition, our members continue to commit time and energy to this program as labor for additional new homes, with one member also teaching required class on money management for families receiving new homes in the program. In 2017, Messiah donated the lot across the street for a Habitat home, and held a "Welcome to the neighborhood" block party when habitat receiver given keys to house, complete with Hamburgers, Hotdogs, and Music.

Messiah + one member financially provide funding for "The Backpack Program" with two elementary schools. The program provides food and meals for elementary children for Friday night through Sunday night (times when children are not in school).

Messiah members that enjoy woodworking make comfort crosses and can easily be held in the hand for prayers. These are distributed to people in hospitals, nursing homes, and

home visits to the elderly and ill members of the congregation. Crosses are also sent to ministers in the armed forces to be distributed to our countries service men and women. Also, our youth who are confirmed received a cross as symbol of God's love for them at their first communion.

Messiah has monthly collections for local food pantry. Through various active groups there are winter coat drives, clothing drives for those in need, sock drives, school kits, health kits, dress kits, Habitat fund raising and/or volunteer drives, and any request put before the congregation for helping needs. Around Thanksgiving, food and baskets are collected and distributed to church members and the community that are in need. Each basket contains enough for a family's Thanksgiving meal including a turkey.

Messiah Youth group has/is active with various missions with community outreach, locally and widespread. Through the years, they have traveled to Texas to help with tornado disaster relief, New Jersey for Hurricane Sandy disaster relief, Colorado for suicide prevention and food bank efforts, Kansas City and Omaha for food bank and property cleanup efforts, and 2019's mission trip is to Chicago. Locally, they volunteer at the Grand Theater (run completely by volunteers); the Humane Society; visit various retirement homes, and make health care kits which are distributed to the needy.

Messiah has a "transportation ministry" where a member pays for transportation for anyone to and from church, for anyone in the community that needs a ride. A few members offer rides for anyone in need as part of "Faith in Action / God's Work Our Hands" effort.

Messiah has had members give generously to ELCA (Good Gifts Program), and NE Disaster relief funds (Pilger).

In 2019, Messiah members have been very active with Human Trafficking awareness and prevention efforts, includes raising funds and offering community education seminars open to anyone wanting to attend.

Saturday Suppers Ministry

The Saturday Suppers ministry started on January 1 2005, as the Salvation Army stopped serving meals for those in needs on the weekend. The people who started this ministry had a vision of helping others, to love unconditionally.

Messiah serves meals every week from 4:30pm to 5:30pm, and the Men's Group delivers meals to homebound members, as well as other individuals and several families. There are several "teams" that work alternately, and food pick up / prep usually begins around 7:00am. Most everyone stays until supper is over, and cleanup is done.

Food suppliers are CHI St. Francis Medical Center, both Super Saver Grocery Stores, HyVee Grocery, Panera Bread Restaurant, The Food Bank (when possible), and members Bob and Connie Krohn for fresh eggs.

Meals served within the past 14 years of service (and counting) are approximately 85,000 to 90,000. Each week, there are variety of people inquire about helping to provide a place of comfort, food to eat and to take home. Grand Island Public Schools has approximately 200 young people who are 1. Homeless, 2. Unstable home situation, 3. Or who typically move around from friend to friend's house, and we see some of these young people.

People volunteer to help with Saturday Suppers, most Messiah members, but others from different churches have really started helping out, from Third City Christian Church, St. Stephen's Episcopal, St. Paul's members (St. Paul, NE), Army National guard of Grand Island, and others.

The Coats and Clothes Closet started a few years ago by Judy Humiston, and is available during Saturday Suppers time. In 2018, more then 160+ coats given to those who were in need.

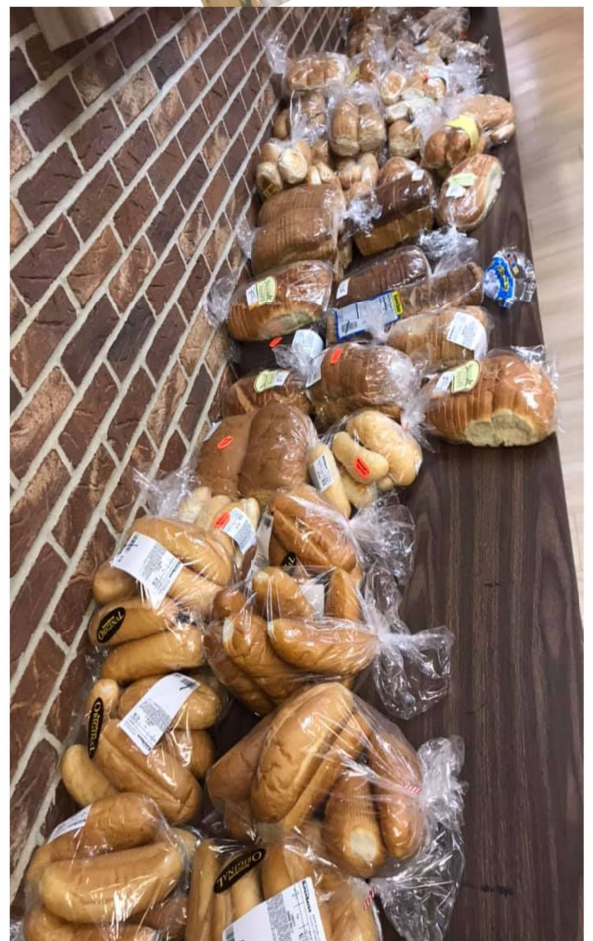














Vacation Bible School

2019 there have been a lot of changes for Messiah. Messiah has a joint fellowship with St. Stephen's Episcopal Church, and combined our resources with St. Paul's Lutheran Church for summer vacation bible school. The Theme was Jonah and the Whale and Decorations were created as a multi-congregational effort with all four churches working together at Peace Lutheran Church. Peace held their VBS June 3-1 2019 and Messiah's, St. Stephen's, and St. Paul's joint VBS was held June 10-14 2019. There were 150+ children signed up this year. They all had a great time.













Worship Services

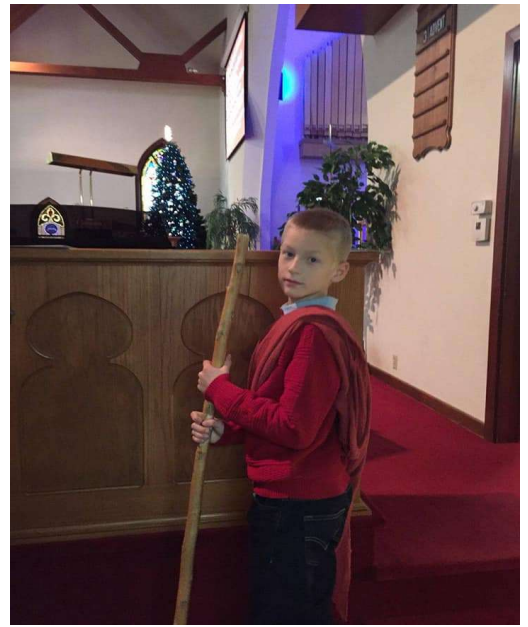
Sunday Worship Service is at 8:30am with fellowship and adult bible study immediately after. Coffee and pastries served for fellowship and adult bible study held in the lounge.

Youth fully conducted service the last Sunday of the month, every 3rd month.



Christmas Story – A Youth Service 2018





Youth Service December 2018

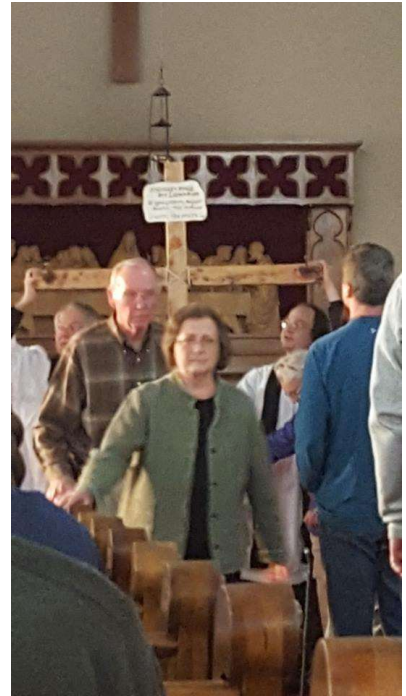


Maundy Thursday Joint Service at St. Stephen's Episcopal Church 2019



This was an amazing service – emotional and “waking”. It brought the meaning of Jesus’s “service out of love” to life, and the realization that his word is relevant today as it was then.





Good Friday Service 2019
Joint Service between
Messiah Lutheran and
St. Stephen's Episcopal
Churches.

Pastor Jim and Father Robert's objective was to project what the disciples were feeling. This was "heavy" and somber service, and the realization of Jesus's suffering and sacrifice was divulged in full, very affecting.





Easter Sunday Service 2019
Joyful and jubilant!



Easter Breakfast 2019 – hosted by Messiah Youth



Wonderful parents who are always so willing to help out.



Lots of wonderful food and Great Fellowship for the celebration of Easter.







Messiah Youth activities examples: Making May Day Baskets

Visiting
Assisted
Living
Facilities



Loads of Love give-a-way



Mission Trip Kansas City and Omaha 2018
Helped with food bank and learned about human trafficking.



Taking in a KS City Royals Game and having a little fun on 2018 Mission Trip!





Valentine Dinner Fundraiser for Messiah / St. Stephen's Youth Group 2019
German Theme





2019 Easter Egg Hunt Messiah Lawn – neighborhood/community invited



This year there were probably 100 + more than last year.
Amazing what Social Media can do when utilized.



Joint Confirmation: Messiah and St. Stephen's Youth Service at Messiah, then at St. Stephen's with dinner afterwards. Both Bishops attended, gave blessings to the confirmands.



Messiah and St. Stephen's Youth enjoy having a joint youth group. Both churches are helping each other out with youth education and resources needed.

The Youth have really taken charge to be more involved not only with each other's churches, but in the community as well.



Habitat for Humanity house build and block party, entire neighborhood invited.



Messiah Women following the mission of Messiah and spreading Jesus's love throughout the community.



Teaching how to make sleeping mats for homeless.



Visiting
Assisted
Living
facilities.



Giving time, joy and love.





Located in the heart of Nebraska along Interstate 80, Grand Island has grown to be the largest city between Lincoln, NE and Denver, Co. A positive business climate and welcoming culture have become a draw for visitors, new residents, and businesses looking to succeed. While Grand Island has a wealth of big city amenities, the beautiful Platte River and rolling NE Sandhills are just a few miles away. There are plentiful hunting, camping / outdoor, and water sport opportunities. It's heartland Hospitality with Urban Flair.

There are limitless opportunities to get involved and make new friends within the community. Grand Island offers a wide range of community service groups and clubs, churches of many denominations, host of classes in the arts, athletics, life skills and more through Grand Island's Park and Recreation Dept., YMCA, YWCA, and others organizations.

With the varied temperatures here, there are numerous ways to relax and spend leisure time with a wide array of quality private and public recreational facilities. Some examples are: numerous parks (with bandstands), golf facilities, tennis / racquetball courts, softball, volleyball, basketball and soccer fields, bowling alleys, roller-skating rink, miles of hike / biking trails, sledding areas, and historic downtown area – renamed Railside (arriverailside.com) for HEAR Grand Island concert series during the summer, Car shows, Craft brew & Sausage Fest, Harvest of Harmony Parade, Trick or Treating, and Christmas events. Downtown area is also host of art

galleries, numerous antique shops, eateries, and Historic Grand Theater that shows second-run films, hosts live music, speakers and comedians, operated by non-profit organization dedicated to its preservation.

Grand Island offers strong community support in excellent pre-kindergarten through 12th grade public and private education programs, as well as various college educational / arts organizations from graduate level to master degrees, as well as continuing ed. Programs from several programs including the University of NE. Lincoln Extension office, and Central NE Area Health Ed. Centers. Grand Island is also home to NE Law Enforcement Training Center, Joseph's College of Beauty, Xenon's International School of Hair Design.

Grand Island is home to two hospitals – St. Francis Medical Center and U.S. Veterans Administration Medical Center, with a third hospital in construction. The community also has a wide variety of medical clinics, dental, optical, and chiropractic offices, numerous nursing homes and assisted living facilities. The Fire Department, Mid-West Medical, and Life Flight offer 24-hr emergency medical care and transport.

Grand Island goes the extra mile to make this community a safe place to live. The Grand Island Police Department provides municipal police services. The Grand Island Fire Department is committed to the community through emergency services, fire prevention and safety education.

Here are some resources to find more information about Grand Island, NE:

<https://www.gichamber.com/>

<https://www.grand-island.com>

<https://www.hallcountyne.gov>

<https://www.growgrandisland.com>

<https://gilca.org/> (Livestock Complex Auth)

<https://www.gichamber.com/events/calendar/>

https://issuu.com/gichamber/docs/lookbook_full_spread

<https://visitgrandisland.com/>

<https://www.gichamber.com/industries>

<https://www.gichamber.com/economy>
<https://www.gichamber.com/medical>
<https://www.gichamber.com/education>
<https://www.statefair.org/>
<https://www.fonnerpark.com>
<https://grandisland.eventticketscenter.com>

Why Grand Island?

Community Profile

Grand Island is fortunate to have experienced a robust population growth within the last 10 years and weathered the recession better than many communities in the nation. Having exceeded a population of 50,000, Grand Island's growth upgraded its status to a metropolitan statistical area (MSA), joining the ranks of fellow Nebraska MSAs, Omaha and Lincoln.

Population

Grand Island has a population of 51,440 and a labor market population of 43,000.

Hall County added nearly 4,400 jobs between 2003 and 2013, with employment actually expanding by 3.6% between 2008 and 2013, a five-year period that corresponds with the national recession and subsequent recovery.

City	Population	Total Acres of Parks	Park Acreage / 1,000 Residents
Grand Island, NE	49,989	437 ac	13 ac
Hastings, NE	25,058	300 ac	10 ac
Kearney, NE	30,787	445 ac	17 ac
Omaha, NE	421,570	10,391 ac	25 ac

Age

The median age in Grand Island is 34.7 years, compared to the national median of 37.5 years.

The "19 and under" age group experienced the largest increase in population in the last decade, and is expected to continue to grow at a rate of 5.2%. This means Grand Island is full of young people ready to enter the workforce.

Race / Ethnicity

As the population in Hall County has grown, so too has its diversity. Ethnic minorities currently makeup 29.3% of the population in Hall County.

Economic Profile

In terms of key economic metrics, Hall County has median household incomes and per capita incomes (as of 2014) that are slightly below those of the state of Nebraska overall. Unemployment rate is relatively low compared to many places nationally or even in the state.

Workforce*
Manufacturing 20.3%
Social Services/ Health/ Education 18.4%
Retail 15.7%
Other 45.6%

Median Household Income**
Hall County \$50,924
Nebraska \$51,686

Per Capita Income**
Hall County \$23,195
Nebraska \$26,413

Unemployment Rate***
Hall County 3.2%
Nebraska 3.4%

Source: *city-data.com, 2014, **ESRI , 2014, ***Nebraska Department of Labor, 2014

Play

This area acts as the gateway to the Sandhills, offering miles of prairie, river valleys, and reservoirs for exploration. During the early spring, the Platte River and its wetlands is a migratory stopover for Sandhill Cranes and waterfowl. Birding is a popular pastime throughout the year. The county is abutted by three scenic byways, notably the Lincoln Highway, which travels throughout the year and two major regional events: the Annual Harvest of Harmony Parade and Husker Harvest Days, the worlds Largest totally irrigated farm show. Grand Island is also home to the Nebraska State Fair.

The table below outlines some data concerning various recreational amenities for Hall County, compared to some similar areas around the Midwest.

Recreational Amenities Comparison Table	Hall County, NE	St Joseph, MO	Sioux City, IA	Salina, KS	Manhattan, KS	Rapid City, SD	Ames, IA	Iowa City, IA
Population	60,669	76,780	82,684	47,707	52,281	67,956	58,965	67,862
Skating Rinks	1	3	1	2	0	1	1	0
Golf Courses	6	4	7	3	4	7	3	10
Public swimming pools	4	3	5	2	3	8	3	5
Movie theater screens	7	12	30	10	12	17	17	12
Bowling alleys	3	3	3	1	1	2	2	1
Shooting ranges	1	0	7	0	2	3	5	2
County/ state fairs	2	1	1	0	1	2	1	1
Museums	1	12	6	3	1	6	3	7
Nature centers	1	1	1	1	3	1	0	0
Conference centers/ event facilities	6	4	2	4	5	1	2	3

Source: Design Workshop research



Harvest of Harmony Parade



Nebraska State Fair



Island Oasis Water Park



Eagle Scout Softball Complex



Higher Education Programs in Hall County

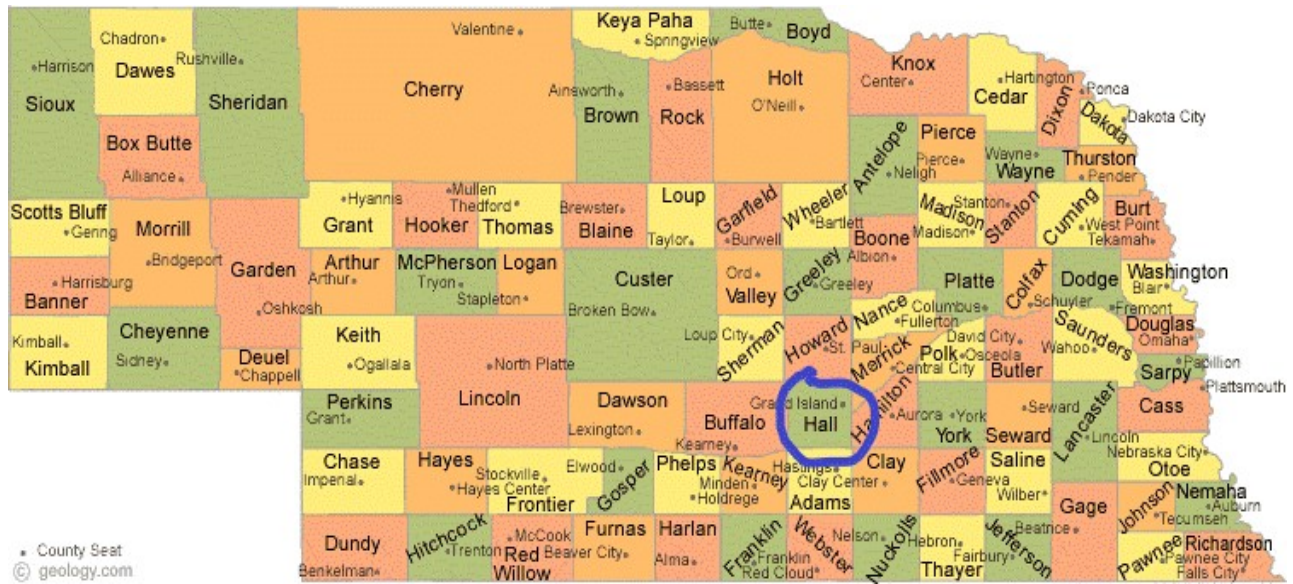
Adult Education Facilities: Joseph's College, Xenon International Academy, Nebraska National Guard, Nebraska Law Enforcement Training Center

Post Secondary: Central Community College, Doane College, Bellevue College, College Park

Images of Grand Island, NE

Cranes in flight over the Platte. <https://cranetrust.org/>





Hall Co. Courthouse



Grand Island City Hall



NE Law Enforcement Memorial





Island Oasis Water Park



www.gilibrary.org



Downtown 3rd Street

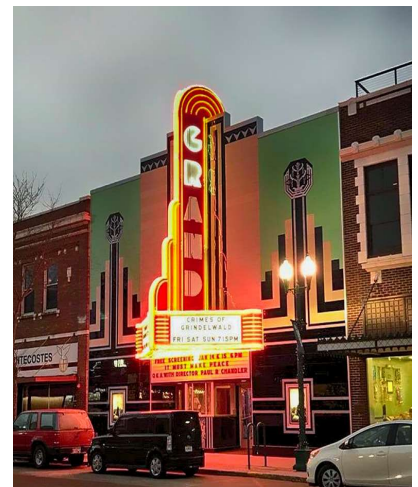


Railside Community Area - 3rd Street



Great Food (Historical Coney Dogs)

Historical Grand Theater
(Run completely by
volunteers)



Central Nebraska Regional Airport <https://flygrandisland.com/>



CHI – St. Francis Medical Center <https://www.chihealth.com/st-francis.html>



Nebraska Veteran's Hospital



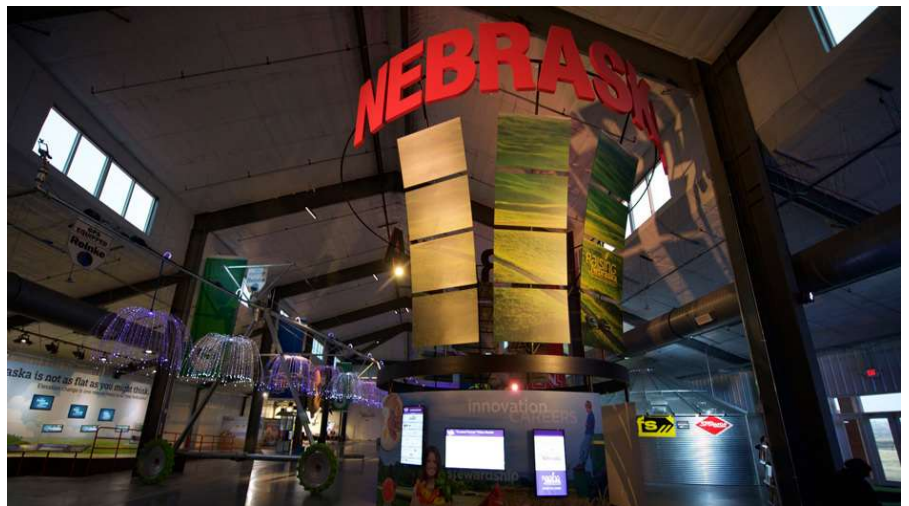
<https://givetsclub.com/>



Stuhr Museum – Nebraska's 1890's living history community where you can explore the 1890's and meet real historic interpreters.



A few of the industries in Grand Island. <https://www.gichamber.com> for more information.



A few Historic buildings around Grand Island:

St. Mary's Catholic Church



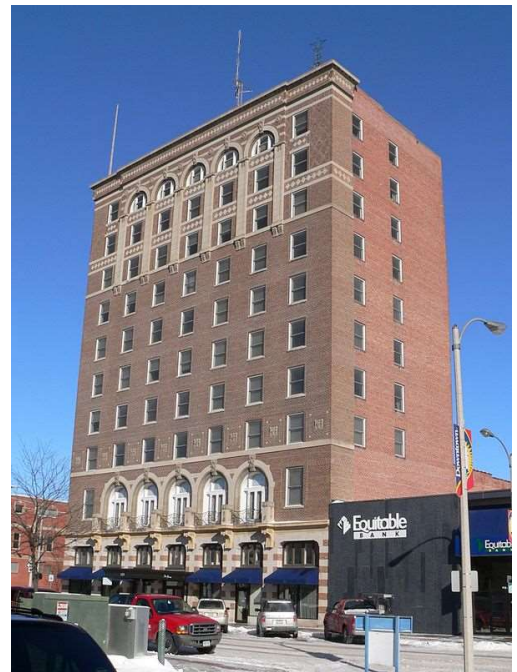
St. Stephen's Episcopal Church



Masonic Temple



The Yancy



Walnut School Apartments



A few of the Parks
Stolley Park



Art in the Park @ Stolley Park



Kids Kingdom play area @ Stolley Park

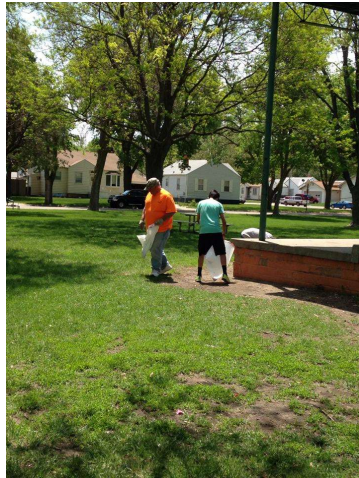


Flower Garden at Stolley Park



Messiah adopted Grace Abbott Park

Day picking up.
Community Day in the
Park is held here.



Pier Park



Buechler Park – Where lots of plays and concerts are held.





Chrysalis is an apartment complex, which is a non-profit corporation established for the elderly and disabled as a joint venture by Messiah Ev. And St. Paul's Lutheran, funded through the U.S. Department of Housing and Urban Dev., and owned by Lutheran Homes, Inc. There are five Messiah members on the board.



Messiah's Facilities



Sanctuary



Loft above – overlooking altar



Fellowship Room
with large kitchen

Storage Area



Classrooms



Front Entry Area and Library



Classroom



Parsonage



Very Brief History of Messiah

August 5, 1883, seventeen German Families, assisted by Rev. H. Siekmann, C.H. Duennermann, and Rev. J.N. Lenker, organized the group which was named St. Paul's German Evangelical Lutheran Church – later known as Messiah. 2018 marked the 135th Anniv. of Messiah Evangelical Lutheran Church.

The group purchased a small church for \$700.00, and in 1884 purchased land at 7th and Walnut (current location), moved the church and built a parsonage. Thus the church was formed, and through good and hard times, with the generous help of members and volunteers and donations, Messiah thrived. Messiah grew to where expansion was needed, schools and committee worship groups were formed. A notable mention is that there are many current members who's membership goes back generations.

While some traditions passed on, new ones were added, but one thing that has always remained the same is that Messiah has always been very active with members and within the community. Messiah has various active groups that visit assisted living facilities, raise money for / and volunteer at Salvation Army, Hope Harbor, Mosaic, Habitat for Humanity, and the Crisis Center. Messiah is also known for collecting school supplies, health kits, sewing kits for Lutheran World Relief, and collecting school supplies, sewing backpacks, hats, gloves, coats, socks, and scarves which are donated locally. The sewing ladies make quilts for Carol Joy Holling Camp fundraiser. Messiah is also known for Saturday Suppers. In 2019, Human Trafficking awareness and prevention efforts introduced to members, including raising funds and offering community education seminars open to the public. These are only a few of the activities members drive or assist with to follow Messiah's mission, and we are very

blessed that our youth are joining in a mission that they believe in, to help make the world a better place – little bit at a time.

While the past few years have been in decline, as most churches have been, Messiah members have had to go through “growing and healing pains”. Looking at ourselves, realizing that change is happening – good or bad – and attempting to deal with it. Some members have chose a different path from Messiah for their reasons, and some have realized that Messiah needs work, and leaving is not the answer. Members, especially younger members, are excited about change and their excitement is going to be the drive in Messiah’s direction, but figuring out a direction, thus-far, has not been easy. If Messiah’s past says anything, members are dedicated, loyal, determined, and will figure it out.

2018 Pastor's Report Summary

I submit this report admitting that I know only a part of the story. I have been blessed to provide pastoral care for Messiah members from October through the end of the year. It is my hope that as we enter this New Year, we may go to a place of renewal and strength.

The great highlight of this year was our progressive service of confirmation. It is every pastor's dream to see accomplished with is the fleeting dream of so many churches. Our young people are stepping up to the plate, taking their roles in creating the church of tomorrow. That proves we are on the right track. Moreover, it is from the energy of our youth that the unity and promise of working together have resulted in our shared ministry pattern. I guess Isaiah predicted the move of the spirit well when he said "a little child shall lead them."

I recognize that there is a great deal of hurt surrounding Pr. Bill's departure. When pastoral leadership hits rough spots, it is always the job of the parish family to look at ourselves and identify ways in which we need to change to make future pastoral leadership thrive. I will be doing all in my power to poise you for a successful future by poising us to grow today.

I think we have great promise with great deal of prayer and some dedication to being flexible. I think I join Pr. Jim Fruehling in saying "I'm proud to be walking with you during this time. Let's feed God's sheep inside and outside these walls together."

Fr. Robert+